



# Biometric/Multiple Authentication for Logical Access

**BIO\*GATE®** represents a revolutionary IT solution when using biometric devices and it does so by meeting two central needs; freedom of choice and enterprise control. BIO\*GATE's unique design enables higher levels of security, simplified password management and reduces costs of operation.

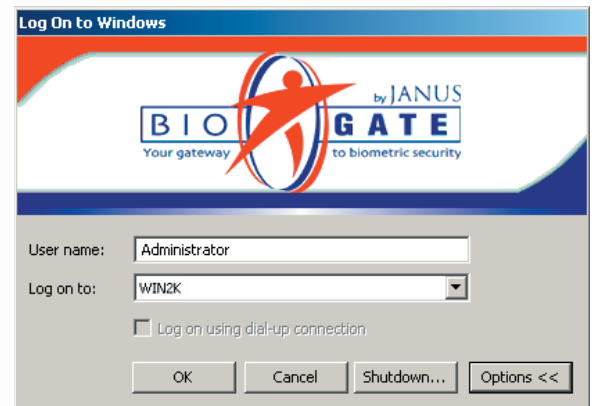
## BIO\*GATE Benefits

- A complete authentication infrastructure
- Enables multi-authentication methods
- Improves security
- Simplifies password management
- Seamless integration
- Supports existing infrastructures
- Centralized or decentralized administration
- Scalability – from small groups to enterprise-wide
- Rapid Return on Investment
- Open Architecture and Standards compliant - BioAPI, CDSA, and CBEFF

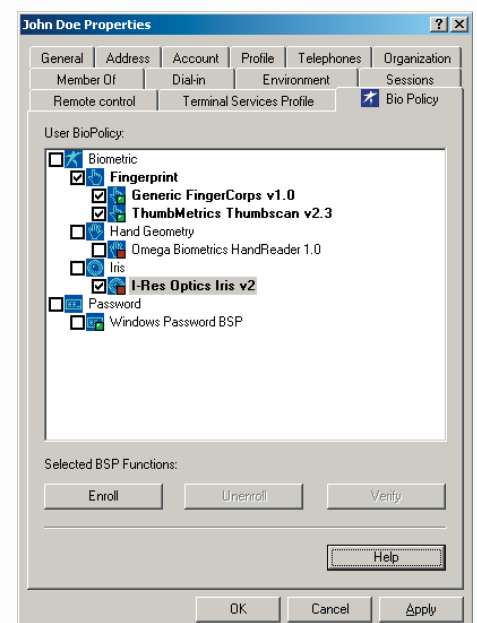
**BIO\*GATE** is a software based authentication product that allows for easy integration and management of different types of biometrics, smartcards and other authentication devices.

BIO\*GATE creates a single unified authentication system for logical and physical system access control that simplifies the enrollment of new users and administration and password management. The client-server architecture of BIO\*GATE allows you to define authentication policies for users while leveraging current and future authentication mechanisms within your corporate environment.

BIO\*GATE eliminates the need to implement different management software every time you deploy new authentication technology and is configurable with many types of biometric devices, encryption methods, and databases. This flexibility is achieved through the use of open architecture and industry standards including BioAPI, CDSA, and CBEFF. BIO\*GATE is available for both Windows and Novell NMAS platforms and is fully scalable from small work groups on up to enterprise wide systems.



BIO\*GATE eases the transition to biometrics by utilizing logon screens that are familiar to Windows network users.



Deploying devices for specific users or groups within BIO\*GATE is easy. Simply check off boxes to choose the desired device.

## **BIO\*GATE 2.0 for Windows**

---

BIO\*GATE 2.0 for Windows extends the standard Windows logon structure by integrating the use of biometrics including fingerprint, iris scan, voice recognition, hand geometry and facial recognition systems. BIO\*GATE also supports Smart Cards and its design is capable of supporting future technologies. BIO\*GATE achieves this level of interoperability by replacing an insecure password with a biometric policy of your choice that can contain one or any combination of authentication types. A user friendly password screen that resembles the standard Windows Logon screen and supports standard Windows passwords is included to assist in the transition from passwords to biometrics.

Administration of large scale systems is quick and less complicated due to BIO\*GATE's ability to assign biometric policies to Windows Groups. This enables large groups of users to be quickly defined and activated. Depending on the level of security needed, users can be allowed to initially enroll at their own desktop making the implementation of BIO\*GATE effortless. Should a higher level of security be required, this desktop enrollment feature can be disabled with a single mouse click. In this scenario all users report to a centralized location such as the IT or HR department for enrollment. This enables actual physical verification of identity prior to a user being enrolled. After performing this centralized enrollment BIO\*GATE operates in a normal manner by allowing verification of the individual user at their local network computer. Enabling this feature prevents the creation of new user templates without the knowledge of the system administrator. In other words, unauthorized access to your system is virtually eliminated.

- Supports: Windows 2000, Windows XP and Windows 2003
- BIO\*GATE 2.0 for Windows ..... BGW20

## **BIO\*GATE 1.3 for Novell**

---

BIO\*GATE 1.3 for Novell greatly enhances Novell flexibility by expanding its NMAS-based system to utilize a vast array of biometric brands and devices from the single alternative available today. BIO\*GATE 1.3 for Novell accomplishes this by creating a standardized interface that is seamlessly integrated with the authentication and login components of the NMAS module. BIO\*GATE 1.3 for Novell establishes a biometric system architecture that gives system administrators the flexibility to deploy different brands and types of biometric devices at multiple locations based on the level of security needed at each site.

- Supports: NMAS 2.3 or later for Windows Server
- BIO\*GATE 1.3 for Novell ..... BGN13

## **BIO\*GATE Support Package**

---

BIO\*GATE Technical Support is available on a per-incident basis or as part of a comprehensive annual package. Support is available during our normal business hours of 8:30 am to 5:00 pm Eastern Time, Monday - Friday except holidays. Custom support packages including 24/7, 365 days a year are available on a quote-only basis based on the total system size. Please contact your sales representative for additional information.

- BIO\*GATE Support Package ..... BGSUP

**JANUS Associates, Inc. • 9 West Broad Street • Stamford, CT 06902 • U.S.A.**  
**Telephone: 1.203.251.0200 • [www.janusassociates.com](http://www.janusassociates.com)**

**JANUS is a certified, woman-owned small business**